

POSIFLEX

MULTIFUNCTIONAL POS PERIPHERALS



Contents

POS Monitor	<u>Standalone</u>	<u>2</u>
	<u>Attachment</u>	<u>4</u>
Line Display	<u>Standalone</u>	<u>8</u>
	<u>Attachment</u>	<u>10</u>
Attachment		<u>14</u>
POS Printer		<u>17</u>
Cash Drawer		<u>19</u>
POS Keyboard		<u>20</u>
Barcode Scanner		<u>22</u>
MSR & Signature Pad		<u>24</u>

POS Monitor / Standalone

7"

9.7"



Model Name	LM-6207U	LM-6210U	LM-3310E
LCD	7" TFT LCD	9.7" TFT LCD	9.7" TFT LCD
Resolution	Up to 800 x 480	Up to 1024 x 768	Up to 1024 x 768
Touch	N/A	N/A	N/A
Interface	USB	USB	VGA
Dimension (W x D x H in mm) & Weight	216 x 107 x 471 & 0.93 kg	245 x 188 x 206 & 1.69 kg	245 x 188 x 206 & 1.69 kg
VESA Mounting Support	N/A	Yes	Yes
Options	N/A	N/A	N/A

9.7"

12.1"



Model Name	LM-3110E	TM-3110E	LM-2012E	TM-2012E
LCD	9.7" TFT LCD		12.1" TFT LCD	
Resolution	Up to 1024 x 768		Up to 1024 x 768	
Touch	N/A	Bezel-free PCAP Touch	N/A	Resistive Touch
Interface	VGA		VGA	
Dimension (W x D x H in mm) & Weight	245 x 188 x 206 & 1.69 kg		298 x 254 x 262 & 2.48 kg	
VESA Mounting Support	Yes		Yes	
Options	N/A		MSR Side Attachment	

POS Monitor/ Standalone

14"

15"



Model Name	LM-3114E	TM-3114E	LM-3115E	TM-3115E
LCD	14" TFT LCD		15" TFT LCD	
Resolution	Up to 1366 x 768		Up to 1024 x 768	
Touch	N/A	Bezel-free PCAP Touch	N/A	Bezel-free PCAP Touch
Interface	VGA		VGA	
Dimension (W x D x H in mm) & Weight	372 x 252 x 271 & 3.69 kg		372 x 258 x 300 & 4.71 kg	
VESA Mounting Support	Yes		Yes	
Options	MSR Side Attachment		Side Attachment of MSR, RFID & Fingerprint Sensor	

15"

17"



Model Name	LM-3315E	TM-3315E	TM-7117E	TM-7717E-IR
LCD	15" TFT LCD		17" TFT LCD	
Resolution	Up to 1024 x 768		Up to 1280 x 1024	
Touch	N/A	Resistive Touch	Resistive Touch	IR Touch
Interface	VGA		VGA	
Dimension (W x D x H in mm) & Weight	372 x 258 x 300 & 4.71 kg		401 x 286 x 385 & 6.82 kg	
VESA Mounting Support	Yes		Optional, VESA Mounting Kit (WB-6000V-B)	
Options	Side Attachment of MSR, RFID & Fingerprint Sensor		MSR & Key Pad Side Attachment	

POS Monitor/Attachment

For RT Series



Model Name	LM-4010	LM-4010DP	TM-4010	TM-4010DP	LM-4011	LM-4011U	LM-4011DP	TM-4011	TM-4011DP
LCD	9.7" TFT LCD				10.1" TFT LCD				
Resolution	Up to 1024 x 768				Up to 1280 x 800				
Touch	N/A		Bezel-free PCAP Touch		N/A			Bezel-free PCAP Touch	
Interface	VGA	DP	VGA	DP	VGA	USB	DP	VGA	DP
System Supported	RT Series				RT Series				

For XT Series & 12" KS Series



Model Name	LM-6607U	LM-3010E	TM-3010E	LM-3210E
LCD	7" TFT LCD	9.7" TFT LCD		9.7" TFT LCD
Resolution	Up to 800 x 480	Up to 1024 x 768		Up to 1024 x 768
Touch	N/A	N/A	Bezel-free PCAP Touch	N/A
Interface	USB	VGA		VGA
System Supported	All XT Series (excl. XT-2614Q) & 12" KS Series			



Model Name	LM-2512E
LCD	12.1" TFT LCD
Resolution	Up to 1024 x 768
Touch	N/A
Interface	VGA
System Supported	All XT Series (excl. XT-2614Q) & 12" KS Series

POS Monitor/Attachment

for XT Series



Model Name	LM-3014E	TM-3014E	LM-3015E	TM-3015E
LCD	14" TFT LCD		15" TFT LCD	
Resolution	Up to 1366 x 768		Up to 1024 x 768	
Touch	N/A	Bezel-free PCAP Touch	N/A	Bezel-free PCAP Touch
Interface	VGA		VGA	
System Supported	All XT Series (excl. XT-2614Q)			



Model Name	LM-3015/PM	LM-3215E	TM-3215E
LCD	15" TFT LCD	15" TFT LCD	
Resolution	Up to 1024 x 768	Up to 1024 x 768	
Touch	N/A	N/A	Resistive Touch
Interface	VGA	VGA	
System Supported	All XT Series (excl. XT-2614Q)		

for KS Series



Model Name	LM-6307U	LM-3010E/KS	TM-3010E/KS	LM-3210E/KS
LCD	7" TFT LCD	9.7" TFT LCD		9.7" TFT LCD
Resolution	Up to 800 x 480	Up to 1024 x 768		Up to 1024 x 768
Touch	N/A	N/A	Bezel-free PCAP Touch	N/A
Interface	USB	VGA		VGA
System Supported	10" & 15" & 17" KS Series			

POS Monitor/Attachment

For KS Series



Model Name	LM-2312E	LM-3015E/KS	TM-3015E/KS
LCD	12.1" TFT LCD	15" TFT LCD	
Resolution	Up to 1024 x 768	Up to 1024 x 768	
Touch	N/A	N/A	Bezel-free PCAP Touch
Interface	VGA	VGA	
System Supported	15" & 17" KS Series		



Model Name	LM-3215E/KS	TM-3215E/KS	LM-8025E
LCD	15" TFT LCD		15" TFT LCD
Resolution	Up to 1024 x 768		up to 1024 x 768
Touch	N/A	Resistive Touch	N/A
Interface	VGA		VGA
System Supported	15" & 17" KS Series		KS Series with GEN 5/5.5 Base



Model Name	LM-8045E	TM-8045E	LM-6801E	LM-8055E
LCD	15" TFT LCD		12.1" TFT LCD	15" TFT LCD
Resolution	up to 1024 x 768		up to 1024 x 768	up to 1024 x 768
Touch	N/A	Resistive Touch	N/A	N/A
Interface	VGA		VGA	VGA
System Supported	KS Series with GEN 5/5.5 Base		KS Series with GEN 6/8.5 Base	

POS Monitor/Attachment

For PS Series



Model Name	LM-6807U	LM-6810U
LCD	7" TFT LCD	9.7" TFT LCD
Resolution	Up to 800 x 480	Up to 1024 x 768
Touch	N/A	N/A
Interface	USB	USB
System Supported	PS Series	

For HS Series



Model Name	LM-6507U	LM-3010E/HS	LM-3210E/HS	LM-2612E
LCD	7" TFT LCD	9.7" TFT LCD	9.7" TFT LCD	12.1" TFT LCD
Resolution	Up to 800 x 480	Up to 1024 x 768	Up to 1024 x 768	Up to 1024 x 768
Touch	N/A	N/A	N/A	N/A
Interface	USB	VGA	VGA	VGA
System Supported	HS Series			12" HS Series

Line Display / Standalone

VFD



Model Name	PD-2600 Series		PD-2800UE
Form Factor	Standalone with pole (300 mm), 270° horizontal swivel		Standalone with pole (300 mm), 355° horizontal swivel
Display Color	Blue or green		Blue or green
Display Size	2 x 20		2 x 20
Dot Matrix	5 x 7 dots		5 x 7 dots
Character Size	9.03 mm x 5.25 mm		9.03 mm x 5.25 mm
Tilt Angle Adjustment	15°, 30° and 45°		15° and 23°
Interface	Serial for PD-2600R	USB (True USB/Virtual COM selectable) for PD-2600UE	USB (True USB/Virtual COM selectable)
Supported Command Types	ADM, Aedex, ESC/POS, Futaba, Noritake, UTC		ADM, Aedex, ESC/POS, Futaba, Noritake, UTC
Dimension (W x D x H in mm) & Weight	220 x 110 x 410 & 840 g		200 x 116 x 265 ~ 395 & 840 g

LCD



Model Name	PD-300R	PD-320UE
Form Factor	Standalone with pole (300 mm), 270° horizontal swivel	Standalone with pole (300 mm), 355° horizontal swivel
Display Color	Blue or green	Blue or green
Display Size	2 x 20	2 x 20
Dot Matrix	5 x 7 dots	5 x 7 dots
Character Size	6.0 mm x 9.6 mm	6.0 mm x 9.6 mm
Tilt Angle Adjustment	15°, 30° and 45°	15° and 23°
Interface	Serial	USB (True USB/Virtual COM selectable)
Supported Command Types	PST (Posiflex proprietary command) & ESC/POS	PST (Posiflex proprietary command) & ESC/POS
Dimension (W x D x H in mm) & Weight	220 x 110 x 410 & 840 g	200 x 116 x 265 ~ 395 & 480 g

Graphical LCD



Model Name	PD-6207U	PD-76X0R
Form Factor	Standalone with pole (300 mm), 270° horizontal swivel	Standalone with pole (300 mm), 270° horizontal swivel
Display Color	Adjustable font and background color	Blue background with white backlight
Display Size	7" TFT LCD	Four-line display with 30 Arabic letters or 15 Chinese characters per line <ul style="list-style-type: none"> • PD-7610R: Simplified Chinese (GB-2312) • PD-7620R: Traditional Chinese (BIG-5) • PD-7630R: Arabic (Windows code page 01256)
Dot Matrix	Up to 800 x 480	8 x 16 dots
Character Size	20 x 2, 20 x 4, 30 x 4	8.47 mm x 4.24 mm
Multimedia Support	JPEG graphics support	N/A
Tilt Angle Adjustment	N/A	15°, 30° and 45°
Interface	USB	Serial
Supported Command Types	ADM, Aedex, ESC/POS, Futaba, Noritake, UTC	ESC/POS
Dimension (W x D x H in mm) & Weight	222 x 188 x 471 & 860 g	221 x 110 x 431 & 920 g

Line Display / Attachment

VFD



Model Name	PD-2601 Series		PD-2602 Series	
Form Factor	Rear-mount with pole (200 mm), 270° horizontal swivel		Base-mount with pole (200 mm), 270° horizontal swivel	
Display Color	Blue or green		Blue or green	
Display Size	2 x 20		2 x 20	
Dot Matrix	5 x 7 dots		5 x 7 dots	
Character Size	9.03 mm x 5.25 mm		9.03 mm x 5.25 mm	
Tilt Angle Adjustment	15°, 30° and 45°		15°, 30° and 45°	
Interface	Serial for PD-2601R	USB (True USB/Virtual COM selectable) for PD-2601UE	Serial for PD-2602R	USB (True USB/Virtual COM selectable) for PD-2602UE
Supported Command Types	ADM, Aedex, ESC/POS, Futaba, Noritake, UTC		ADM, Aedex, ESC/POS, Futaba, Noritake, UTC	
Dimension (W x D x H in mm)	197 x 40 x 392		197 x 40 x 325	
System Supported	HT & PB Series		POS Terminal with GEN 5 Base	



Model Name	PD-2604UE	PD-2605UE	PD-2607UE	PD-2608UE
Form Factor	Rear-mount	Base-mount with pole (200 mm), 270° horizontal swivel	Rear-mount	Rear-mount
Display Color	Blue or green	Blue or green	Blue or green	Blue or green
Display Size	2 x 20	2 x 20	2 x 20	2 x 20
Dot Matrix	5 x 7 dots	5 x 7 dots	5 x 7 dots	5 x 7 dots
Character Size	9.03 mm x 5.25 mm	9.03 mm x 5.25 mm	9.03 mm x 5.25 mm	9.03 mm x 5.25 mm
Tilt Angle Adjustment	N/A	15°, 30° and 45°	N/A	N/A
Interface	USB (True USB/Virtual COM selectable)	USB (True USB/Virtual COM selectable)	USB (True USB/Virtual COM selectable)	USB (True USB/Virtual COM selectable)
Supported Command Types	ADM, Aedex, ESC/POS, Futaba, Noritake, UTC	ADM, Aedex, ESC/POS, Futaba, Noritake, UTC	ADM, Aedex, ESC/POS, Futaba, Noritake, UTC	ADM, Aedex, ESC/POS, Futaba, Noritake, UTC
Dimension (W x D x H in mm)	197 x 40 x 58	197 x 40 x 283	197 x 40 x 58	197 x 40 x 58
System Supported	KS Series	POS Terminal with GEN 6/7/8 Base; 10"/12" KS Series	HS Series	XT Series

VFD



Model Name	PD-2609UE	PD-2610UE
Form Factor	Rear-mount	Rear-mount
Display Color	Blue or green	Blue
Display Size	2 x 20	2 x 20
Dot Matrix	5 x 7 dots	5 x 7 dots
Character Size	9.03 mm x 5.25 mm	9.03 mm x 5.25 mm
Tilt Angle Adjustment	N/A	N/A
Interface	USB (True USB/Virtual COM selectable)	USB (True USB/Virtual COM selectable)
Supported Command Types	ADM, Aedex, ESC/POS, Futaba, Noritake, UTC	ADM, Aedex, ESC/POS, Futaba, Noritake, UTC
Dimension (W x D x H in mm)	197 x 40 x 58	197 x 40 x 58
System Supported	PS Series	RT Series

Line Display / Attachment

LCD



Model Name	PD-305UE	PD-309UE	PD-310UE	PD-340UE
Form Factor	Base-mount, 270° horizontal swivel	Base-mount with pole (200 mm), 270° horizontal swivel	Rear-mount	Rear-mount
Display Color	Blue or green	Blue or green	Blue or green	Blue or green
Display Size	2 x 20	2 x 20	2 x 20	2 x 20
Dot Matrix	5 x 7 dots	5 x 7 dots	5 x 7 dots	5 x 7 dots
Character Size	6.0 mm x 9.6 mm	6.0 mm x 9.6 mm	6.0 mm x 9.6 mm	6.0 mm x 9.6 mm
Tilt Angle Adjustment	15°, 30° and 45°	15°, 30° and 45°	N/A	N/A
Interface	Serial	USB (True USB/Virtual COM selectable)	USB (True USB/Virtual COM selectable)	USB (True USB/Virtual COM selectable)
Supported Command Types	PST (Posiflex proprietary command) & ESC/POS	PST (Posiflex proprietary command) & ESC/POS	PST (Posiflex proprietary command) & ESC/POS	PST (Posiflex proprietary command) & ESC/POS
Dimension (W x D x H in mm)	217 x 29 x 81	197 x 40 x 283	197 x 40 x 58	197 x 40 x 58
System Supported	POS Terminal with GEN 5 Base; KS Series	POS Terminal with GEN 6/7/8 Base; 10"/12" KS Series	KS Series	HS Series



Model Name	PD-350UE	PD-360 Series
Form Factor	Rear-mount	Rear-mount
Display Color	Blue or green	Blue or green
Display Size	2 x 20	2 x 20
Dot Matrix	5 x 7 dots	5 x 7 dots
Character Size	6.0 mm x 9.6 mm	6.0 mm x 9.6 mm
Tilt Angle Adjustment	N/A	N/A
Interface	USB (True USB/Virtual COM selectable)	USB (True USB/Virtual COM selectable) for PD-360UE Serial for PD-360R
Supported Command Types	PST (Posiflex proprietary command) & ESC/POS	PST (Posiflex proprietary command) & ESC/POS
Dimension (W x D x H in mm)	197 x 40 x 58	197 x 40 x 58
System Supported	XT Series	PS Series

Graphical LCD



Model Name	PD-6307U	PD-6507U	PD-6607U	PD-6807U
Form Factor	Rear-mount	Rear-mount	Rear-mount	Rear-mount
Display Color	Adjustable font and background color	Adjustable font and background color	Adjustable font and background color	Adjustable font and background color
Display Size	7" TFT LCD	7" TFT LCD	7" TFT LCD	7" TFT LCD
Resolution	Up to 800 x 480	Up to 800 x 480	Up to 800 x 480	Up to 800 x 480
Character Support	20 x 2, 20 x 4, 30 x 4	20 x 2, 20 x 4, 30 x 4	20 x 2, 20 x 4, 30 x 4	20 x 2, 20 x 4, 30 x 4
Multimedia Support	JPEG graphics support	JPEG graphics support	JPEG graphics support	JPEG graphics support
Tilt Angle Adjustment	N/A	N/A	N/A	N/A
Interface	USB	USB	USB	USB
Supported Command Types	ADM, Aedex, ESC/POS, Futaba, Noritake, UTC	ADM, Aedex, ESC/POS, Futaba, Noritake, UTC	ADM, Aedex, ESC/POS, Futaba, Noritake, UTC	ADM, Aedex, ESC/POS, Futaba, Noritake, UTC
Dimension (W x D x H in mm)	188 x 124 x 130	188 x 124 x 130	188 x 124 x 130	188 x 124 x 130
System Supported	15"/17" KS Series	HS Series	XT Series	PS Series



Model Name	PD-76X1R	PD-76X2R
Form Factor	Rear-mount with pole (200 mm), 270° horizontal swivel	Base-mount with pole (200 mm), 270° horizontal swivel
Display Color	Blue background with white backlight	Blue background with white backlight
Display Size	Four-line display with 30 Arabic letters or 15 Chinese characters per line <ul style="list-style-type: none"> • PD-7611R: Simplified Chinese (GB-2312) • PD-7621R: Traditional Chinese (BIG-5) • PD-7631R: Arabic (Windows code page 01256) 	Four-line display with 30 Arabic letters or 15 Chinese characters per line <ul style="list-style-type: none"> • PD-7612R: Simplified Chinese (GB-2312) • PD-7622R: Traditional Chinese (BIG-5) • PD-7632R: Arabic (Windows code page 01256)
Resolution	8 x 16 dots	8 x 16 dots
Character Support	8.47 mm x 4.24 mm	8.47 mm x 4.24 mm
Multimedia Support	N/A	N/A
Tilt Angle Adjustment	15°, 30° and 45°	15°, 30° and 45°
Interface	Serial	Serial
Supported Command Types	ESC/POS	ESC/POS
Dimension (W x D x H in mm)	221 x 110 x 275	221 x 110 x 331
System Supported	HT & PB Series	KS Series with GEN 5 Base

Attachment

Side Attachment with MSR (HID/VCOM selection)



Model Name	RA-101	FA-266	SA-104Z
Magnetic Stripe Reading	<ul style="list-style-type: none"> •Bi-directional swipe •3-track support •Support ISO 7811 magnetic card 	<ul style="list-style-type: none"> •Bi-directional swipe •3-track support •Support ISO 7811 magnetic card 	<ul style="list-style-type: none"> •Bi-directional swipe •3-track support •Support ISO 7811 magnetic card
Interface	USB	USB	USB
Options	N/A	Fingerprint Sensor	N/A
System Supported	RT Series	FT Series	14" XT Series & 12" KS Series



Model Name	SA-105Z	SD-366	SD-466Z
Magnetic Stripe Reading	<ul style="list-style-type: none"> •Bi-directional swipe •3-track support •Support ISO 7811 magnetic card 	<ul style="list-style-type: none"> •Bi-directional swipe •3-track support •Support ISO 7811 magnetic card 	<ul style="list-style-type: none"> •Bi-directional swipe •3-track support •Support ISO 7811 magnetic card
Interface	USB	USB	USB
Options	N/A	Fingerprint Sensor	Fingerprint Sensor
System Supported	15"/17" XT Series & PS Series & HC Series	HT Series & LM/TM-2012E POS Monitor	15"/17" KS Series & LM-8025E, TM-7117E, TM-7117E-IR POS Monitor



Model Name	SD-676W	SL-104Z	SL-105Z
Magnetic Stripe Reading	<ul style="list-style-type: none"> •Bi-directional swipe •3-track support •Support ISO 7811 magnetic card 	<ul style="list-style-type: none"> •Bi-directional swipe •3-track support •Support ISO 7811 magnetic card 	<ul style="list-style-type: none"> •Bi-directional swipe •3-track support •Support ISO 7811 magnetic card
Interface	USB	USB	USB
Options	iButton Reader	N/A	N/A
System Supported	15"/17" KS Series	XT-2614Q & 14" LM/TM-3000 Series POS Monitor	15" LM/TM-3000 Series POS Monitor

Side Attachment with iButton Reader



Model Name	SA-205Z	RA-103
Interface	USB	USB
Options	N/A	RFID
System Supported	15"/17" XT Series & PS Series & HC Series	RT Series

3-in-1 Side Attachment with MSR (HID/VCOM selection)



Model Name	SL-305Z	SD-866W	SA-304Z	SA-305Z
Magnetic Stripe Reading	<ul style="list-style-type: none"> •Bi-directional swipe •3-track support •Support ISO 7811 magnetic card 	<ul style="list-style-type: none"> •Bi-directional swipe •3-track support •Support ISO 7811 magnetic card 	<ul style="list-style-type: none"> •Bi-directional swipe •3-track support •Support ISO 7811 magnetic card 	<ul style="list-style-type: none"> •Bi-directional swipe •3-track support •Support ISO 7811 magnetic card
Interface	USB	USB	USB	USB
Options	RFID (HID/VCOM Selectable), Fingerprint Sensor	RFID (HID/VCOM selection), USB WiFi Dongle	RFID (HID/VCOM selection), Fingerprint Sensor	RFID (HID/VCOM selection), Fingerprint Sensor
System Supported	15" LM/TM-3000 Series POS Monitor	15"/17" KS Series	12" KS Series	15"/17" XT Series & PS Series & HC Series



Model Name	SA-405Z	SA-505Z	RA-301	RA-311
Magnetic Stripe Reading	<ul style="list-style-type: none"> •Bi-directional swipe •3-track support •Support ISO 7811 magnetic card 	<ul style="list-style-type: none"> •Bi-directional swipe •3-track support •Support ISO 7811 magnetic card 	<ul style="list-style-type: none"> •Bi-directional swipe •3-track support •Support ISO 7811 magnetic card 	
Interface	USB	USB	USB	
Options	USB 3G Dongle, Fingerprint Sensor	RFID (HID/VCOM selection), iButton	2D Scanner, Fingerprint Sensor	2D Scanner, RFID
System Supported	15"/17" XT Series & PS Series & HC Series	15"/17" XT Series & PS Series & HC Series	RT Series	

Attachment

Rotatable 2D Scanner Attachment



Model Name	SA-715Z	RA-104
Scanner Rotatable Angle	30° frontward/105° backward (along z-axis); 25° sideward (along y-axis)	110° tilt; 180° swivel
Light Source	White LED x 2	White LED x 2
Resolution	752 (H) x 480 (V) pixels	752 (H) x 480 (V) pixels
Depth of Field	40~120 mm (15 mils QR code)	40~120 mm (15 mils QR code)
Scan Method	CMOS array sensor	CMOS array sensor
Scan Angle	Horizontal - 41°, Vertical - 26°	Horizontal - 41°, Vertical - 26°
Scan Rate	Up to 60 fps	Up to 60 fps
1D Barcode Support	JAN/UPC/EAN incl. add on, Codabar/NW-7, Code 11, Code 39, Code 93, Code128, GS1-128 (EAN-128), GS1 DataBar (RSS), IATA, Industrial 2 of 5, Interleaved 2 of 5, ISBNISSN-ISMN, Matrix 2 of 5, MSI/Plessey, S-Code, Telepen, Tri-Optic, UK/Plessey	JAN/UPC/EAN incl. add on, Codabar/NW-7, Code 11, Code 39, Code 93, Code128, GS1-128 (EAN-128), GS1 DataBar (RSS), IATA, Industrial 2 of 5, Interleaved 2 of 5, ISBNISSN-ISMN, Matrix 2 of 5, MSI/Plessey, S-Code, Telepen, Tri-Optic, UK/Plessey
2D Barcode Support	Aztec Code, Aztec Runes, Chinese Sensible code, Codablock F, Composite codes, Data Matrix (ECC200/ECO-140), Maxi Code (mode 2~5), MicroPDF41, QR & Micro-QR Code, PDF417	Aztec Code, Aztec Runes, Chinese Sensible code, Codablock F, Composite codes, Data Matrix (ECC200/ECO-140), Maxi Code (mode 2~5), MicroPDF41, QR & Micro-QR Code, PDF417
Postal Code Support	Chinese Post, Intelligent Mail Barcode, Korean Postal Authority code	Chinese Post, Intelligent Mail Barcode, Korean Postal Authority code
System Supported	15"/17" XT Series & PS Series	RT Series

Side Keypad Attachment



Model Name	KP-300W	KP-450	KP-500	KP-560
Number of Keys	36 programmable keys + 6 position control keys	45 programmable keys	40 programmable keys	36 programmable keys + 6 position control keys
Software Program	Yes	Yes	Yes	Yes
Interface	USB	USB	USB	USB
Options	MSR (HID/VCOM selection)	N/A	MSR (HID/VCOM selection)	MSR (HID/VCOM selection)
System Supported	15"/17" KS Series	10" KS Series	15"/17" XT Series & PS Series	15"/17" XT Series & PS Series

POS Printer

AURA PP Series



Model Name	AURA PP-7600X	AURA PP-7600	AURA PP-8900	AURA PP-8902
Function	3" Thermal Printer with auto cutter		3" Thermal Printer with auto cutter	
Max. Print Speed	Up to 200 mm/sec		Up to 250 mm/sec	
Resolution	Up to 8 dots/mm and 576 dots/line		Up to 8 dots/mm and 576 dots/line	
Paper Width	80 mm or 58 mm		80 mm or 58 mm	
Printing Width	64 mm [512 dots/line, default]/ 72 mm [576 dots/line]		64 mm [512 dots/line]/ 72 mm [576 dots/line]	
Printing Support	QR code and PDF417		QR code and PDF417	
Interface	USB (True USB/Virtual COM selectable) + Serial + LAN	USB (True USB/Virtual COM selectable) + Serial + optional LAN or WiFi	USB (True USB/Virtual COM selectable) + Serial + LAN	USB (True USB/Virtual COM selectable) + Serial
Dimension (W x D x H in mm) & Weight	129 x 149 x 130 & 1 kg		141 x 146 x 211 & 1.34 kg	
Options	Ambient-Lighting Attachment (LD-2100); Kitchen Bell Function	Ambient-lighting attachment (LD-2000); Kitchen Bell Function	Kitchen Bell Function	



Model Name	AURA PP-9000	AURA PP-5200F
Function	3" Speedy Thermal Printer with auto cutter	2" Speedy Thermal Printer with auto cutter
Max. Print Speed	Up to 300 mm/sec	Up to 220 mm/sec
Resolution	Up to 8 dots/mm and 640 dots/line	8 dots/mm, 432 dots/line
Paper Width	83mm, 80 mm or 58 mm	58 mm
Printing Width	53 mm [424 dots/line]/54 mm [432 dots/line]/ 64 mm [512 dots/line, default]/72 mm [576 dots/line]/ 80 mm [640 dots/line]	54 mm [432 dots/line]
Printing Support	QR code and PDF417	QR code and PDF417
Interface	USB (True USB/Virtual COM selectable) + optional Serial, Parallel, LAN or WiFi	USB (True USB/Virtual COM selectable) + Serial
Dimension (W x D x H in mm) & Weight	143 x 205 x 143 & 1.2 kg	120 x 203 x 136 & 1.21 kg
Options	Kitchen Bell Function	Kitchen Bell Function

POS Printer

AURA PP Series



Model Name	AURA PP-6900U/PP-6901U	AURA PP-6906W
Function	3" Thermal Printer with auto cutter *PP-6901U for Posiflex XT-2614Q Android POS	3" Web Based Thermal Printer with auto cutter
Max. Print Speed	Up to 200 mm/sec	Up to 200 mm/sec
Resolution	Up to 8 dots/mm and 576 dots/line	8 dots/mm, up to 576 dots/line
Paper Width	80 mm or 58 mm	80 mm or 58 mm
Printing Width	64 mm (512 dots/line, default)/ 72 mm (576 dots/line)	64 mm (512 dots/line, default)/ 72 mm (576 dots/line)
Printing Support	QR code and PDF417	QR code and PDF417
Interface	USB (True USB/Virtual COM selectable) + optional Serial, Parallel, LAN or WiFi	Ethernet, Wireless LAN
Dimension (W x D x H in mm) & Weight	148 x 205 x 143 & 1.2 kg	148 x 205 x 143 & 1.2 kg
Options	Kitchen Bell Function	Kitchen Bell Function



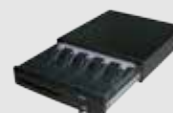
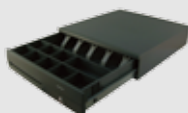
Model Name	AURA PP-8800U	AURA PP-8802	AURA PP-8803
Function	3" Speedy Thermal Printer with auto cutter		
Max. Print Speed	Up to 220 mm/sec		
Resolution	Up to 8 dots/mm and 576 dots/line		
Paper Width	80 mm or 58 mm		
Printing Width	64 mm (512 dots/line, default)/ 72 mm (576 dots/line)		
Printing Support	QR code and PDF417		
Interface	USB (True USB/Virtual COM selectable) + optional Serial, Parallel, LAN or WiFi	USB (True USB/Virtual COM selectable) + Serial	USB (True USB/Virtual COM selectable) + Serial + LAN
Dimension (W x D x H in mm) & Weight	148 x 205 x 143 & 1.2 kg		
Options	Kitchen Bell Function		

Cash Drawer

CR Series



Model Name	CR-2020B	CR-2200 Series	CR-3100 Series
Function	Flip-Top Cash Drawer	Flip-Top Cash Drawer	Compact Cash Drawer
Material	Aluminum die-casting body with plastic top cover	Aluminum die-casting body with plastic top cover	Ruggedized with reinforced steel
Till Insert	<ul style="list-style-type: none"> • 6 fixed bill compartments • 8 adjustable coin compartments 	<ul style="list-style-type: none"> • 2 fixed and 4 adjustable (total 6) bill compartments • 1 fixed and 7 adjustable (total 8) coin compartments 	<ul style="list-style-type: none"> • 5 adjustable bill compartments with plastic bill clip • 5 fixed bill compartment with metal bill clip for CR-3100-US • Adjustable coin compartments
Cheque Slot	Yes	Yes	Yes
Interface	Printer driven, powered by printer or Posiflex system CR port, support 12V/24V voltage range	<p>CR-2210B: Printer driven, powered by printer or Posiflex system CR port, support 12V/24V voltage range;</p> <p>CR-2214B: Dedicated Serial, powered by 12V DC PC power kit;</p> <p>CR-2215B: USB, powered by 12V DC adaptor;</p> <p>CR-2225B: USB, powered by standard USB, auto step up to 12V</p>	<p>CR-3100/CR-3100-US: Printer driven, powered by printer or Posiflex system CR port, support 12V/24V voltage range;</p> <p>CR-3104: Dedicated Serial, powered by 12V DC PC power kit;</p> <p>CR-3115: USB, powered by standard USB, auto step up to 12V</p>
Dimension (W x D x H in mm) & Weight	482 x 175 x 103 & 4.3 kg	460 x 172 x 102 & 4.3 kg	400 x 415 x 90 & 6.95 kg



Model Name	CR-4000/4100 Series	CR-6300 Series
Function	Heavy Duty Cash Drawer	Heavy Duty Cash Drawer
Material	Rugged design with reinforced heavy gauge steel construction	Rugged design with reinforced heavy gauge steel construction
Till Insert	<ul style="list-style-type: none"> • 5 adjustable bill compartments with plastic bill clip on CR-4000 Series • 5 fixed bill compartments with metal bill clip on CR-4100 Series • 9 fixed coin compartments 	<ul style="list-style-type: none"> • Various cash tray configurations
Cheque Slot	Yes	Yes
Interface	<p>CR-4000/CR-4100: Printer driven, powered by printer or Posiflex system CR port, support 12V/24V voltage range;</p> <p>CR-4001/CR-4101: Serial, powered by 12V DC adaptor;</p> <p>CR-4002/CR-4102: Non-dedicated Serial, powered by 12V DC adaptor;</p> <p>CR-4003/CR-4103: Parallel, powered by 12V DC adaptor;</p> <p>CR-4004/CR-4104: Dedicated Serial, powered by 12V DC PC power kit;</p> <p>CR-4005/CR-4105: USB, powered by 12V DC adaptor;</p> <p>CR-4015/CR-4115: USB, powered by standard USB, auto step up to 12V</p>	<p>CR-6310B: Printer driven, powered by printer or Posiflex system CR port, support 12V/24V voltage range;</p> <p>CR-6314B: Dedicated Serial, powered by 12V DC PC power kit;</p> <p>CR-6315B: USB, powered by 12V DC adaptor;</p> <p>CR-6325B: USB, powered by standard USB, auto step up to 12V</p>
Dimension (W x D x H in mm) & Weight	425 x 460 x 105 & 6 kg	426 x 456 x 100 & 8.8 kg

POS Keyboard

BB Series



Model Name	BB-2000 Series	BB-3000W	BB-3000
Function	100% true spill-proof 17-key Bump Bar Programmable Keyboard	100% true spill-proof 10-key Wireless Bump Bar Programmable Keyboard	100% true spill-proof 10-key Bump Bar Programmable Keyboard
Keys Qty	17 programmable keys with 4 x 4 matrix + 1 large key structure	10 programmable keys in 2 x 5 matrix	
Preprinted Keys	1 (Big single key) and 4 x 4 keys as: 1; 2; 3; 4; 6; 7; 8; 4 Screen; 8 screen; Split Screen; Park/Status; Summary; Preview; Recall; Restore	2 x 5 keys : SERVE/RREV/RECALL/SIDE ON/SERVE/NEXT/ RECALL/SIDE OFF + 2 x Reserved	
Code Type	ASCII	ASCII	
Language	English or European, software configured	English or European, software configured	
Contents Length	56 byte[S]/key or 28 2-byte[S]/key	56 byte[S]/key or 28 2-byte[S]/key	
Voltage	5VDC +/- 10%	5VDC +/- 10%	
Vibration	4G	4G	
Shock	40G	40G	
Push Key Switch	1,000,000 strokes to 3,000,000 strokes	2,000,000 strokes/min	
Applicable Conformity	FCC Class A, CE	FCC, CE	
Dimension (W x D x H in mm) & Weight	150 x 100 x 51 & 510 g	209 x 95 x 31 & 540 g	
Environmental	Operation Temp.: 0°C to 50°C Storage Temp.: -20°C to 70°C Humidity: 10 to 90 %; 5 to 90 %	Operation Temp.: 0°C to 40°C Storage Temp.: -35°C to 80°C Humidity: 10 to 90 %; 5 to 90 % non-condensing	
Interface	BB-2000S: Serial BB-2000U: USB	RF	Serial

KB Series



Model Name	KB-4000 Series	KB-6600 Series	KB-6800 Series
Function	40-key Programmable Keyboard	84-key Programmable Keyboard	70-key Programmable Keyboard
Keys Qty	40 key keyboard keys in 4 x 10 matrix structure	84 programmable keys + 6 position control keys	70 programming keys + 6 position control keys
Programming	Software program for non-English (European) language	Programming under DOS (KB-6600 only) and Windows, multiple page, multiple level, whole range key content, time delay, position sense answer back code, etc.	Programming under DOS (KB-6800 only) and Windows, multiple page, multiple level, whole range key content, time delay, position sense answer back code, etc.
Key Top Size	19 mm x 19 mm for single key	19 mm x 19 mm for single key	18 mm x 22 mm for single key
Interface	PS/2 (KB-4000) or USB (KB-4000U)	PS/2 (KB-6600) or USB (KB-6600U)	PS/2 (KB-6800) or USB (KB-6800U)
Dimension (W x D x H in mm) & Weight	210 x 138 x 56 & 0.87 kg	340 x 150 x 58 & 1.09 kg	340 x 150 x 58 & 1.05 kg
Options	MSR and Smart Card Reader (HID/VCOM Selectable), Fingerprint Sensor	Blank key, double key for alternative key group layout; MSR (HID/VCOM Selectable)	Blank key, double key for alternative key group layout; MSR (HID/VCOM Selectable)

Barcode Scanner

CD Series



Model Name	CD-3201 Series	CD-3100U Series
Form Factor	Handheld 2D Barcode Scanner	Handheld 2D Barcode Scanner
Light Source	White light LED x 2	White LED
Resolution	640 (H) x 480 (V) pixels	648 (H) x 488 (V) pixels
Depth of Field	40 – 120 mm (15 mils QR code)	—
Scan Method	CMOS area sensor	CMOS array sensor
Scan Angle	Horizontal: 38°, Vertical: 28.9°	Horizontal: 34°; Vertical: 26°
Scan Rate	Up to 100 fps	—
Decode Capability	<ul style="list-style-type: none"> •BARCODE (1D): JAN/UPC/EAN including add on, Codabar/NW-7, Code 11, Code 39, Code 93, Code 128, GS1-128 (EAN-128), GS1 DataBar (RSS), IATA, Industrial 2 of 5, Interleaved 2 of 5, ISBN-ISSN-ISMN, Matrix 2 of 5, MSI/Plessey, S-Code, Telepen, Tri-Optic, UK/ Plessey •BARCODE (2D): Aztec Code, Aztec Runes, Chinese Sensible Code, Codablock F, Composite Codes, Data Matrix (ECC200), Passport MRZ (OCR-B), Maxi Code (mode 2~5), MicroPDF417, Micro QR Code, PDF417, QR Code •BARCODE (POSTAL CODES): Chinese Post, Intelligent Mail Barcode, Korean Postal Authority Code, POSTNET 	<ul style="list-style-type: none"> •BARCODE (1D): UPC/EAN, Codabar, Code 11, Code 39, Code 93, Code 128, GS1 DataBar, Interleaved 2 of 5, Matrix 2 of 5, MSI •BARCODE (2D): QR code, PDF417, Data Matrix
Interface	USB (CD-3201U) or RS232 (CD-3201R)	USB (CD-3100U)
Dimension (W x D x H in mm) & Weight	63 x 163 x 79 & 191.5 g	71.1 x 62.6 x 169.3 120 g
Options	Scanner stand (ST-8000)	Scanner stand (ST-8000)

CD Series



Model Name	CD-3601 Series	CD-3870 Series
Form Factor	Presentation 2D Barcode Scanner	Handheld 1D CCD Scanner
Light Source	White light LED x 2	Red LED
Resolution	640 (H) x 480 (V) pixels	0.075 mm/3 mil
Depth of Field	40 – 120 mm (15 mils QR code)	20 mm – 500 mm
Scan Method	CMOS area sensor	CMOS area sensor
Scan Angle	Horizontal: 38°, Vertical: 28.9°	45°
Scan Rate	Up to 100 fps	270 scan/sec
Decode Capability	<ul style="list-style-type: none"> •BARCODE (1D): JAN/UPC/EAN including add on, Codabar/NW-7, Code 11, Code 39, Code 93, Code 128, GS1-128 (EAN-128), GS1 DataBar (RSS), IATA, Industrial 2 of 5, Interleaved 2 of 5, ISBN-ISSN-HSMN, Matrix 2 of 5, MSI/Plessey, S-Code, Telepen, Tri-Optic, UK/ Plessey •BARCODE (2D): Aztec Code, Aztec Runes, Chinese Sensible Code, Codablock F, Composite Codes, Data Matrix (ECC200), Passport MRZ (OCR-B), Maxi Code (mode 2~5), MicroPDF417, Micro QR Code, PDF417, QR Code •BARCODE (POSTAL CODES): Chinese Post, Intelligent Mail Barcode, Korean Postal Authority Code, POSTNET 	<ul style="list-style-type: none"> Code 39, Full ASCII Code 39, Code 32, Code 128, Code 93, Code 11, Codabar/NW7, All UPC/EAN/JAN code (EAN-13, EAN-8, UPC-A, UPC-E, EAN-128), Interleave 2 of 5, STD 2 of 5, Industrial 2 of 5, matrix 2 of 5, Chinese Postage Code, IATA, MSI/PLESSY, Italian Pharmacy Code, Telepen. Option decodable: RSS-14, RSS Limited, RSS Expanded
Interface	USB (CD-3601U) or RS232 (CD-3601R)	Serial CD-3870R or USB: CD-3870U
Dimension (W x D x H in mm) & Weight	69 x 61 x 72 & 116.7 g	160 x 60 x 30 & 120 g
Options	Scanner stand (ST-3600B)	N/A

Barcode Scanner

LS Series



MS Series



Model Name	LS-3000U	MS-5145 Series
Function	Handheld 1D Laser Scanner	Handheld 1D Laser Scanner
Light Source	Visible Laser Diode (VLD) @ 650 nm	Visible Laser Diode (VLD) @ 650 nm
Resolution	0.10 mm/4mil at PCS = 0.825	0.102 mm/4 mil
Depth of Field	150 – 400 mm (EAN) @ 0.39mm/13 mil, 90% PSC	0 mm – 140 mm (0" – 5.5") 0.33 mm/13 mil Bar Code
Scan Method	Single scan line	Single scan line
Scan Angle	Read elevation 82°, Read obliquity 72°	50°
Scan Rate	Up to 200 scans/sec	72 scans/sec
Decode Capability	Code 128, UCC/EAN 128, Code 93, UPC-A, UPC-E, EAN-13, EAN-8, ISBN/ISSN, Code 39 (ASCII full code), Code 25 Industrial, Matrix 25, Codabar, Code 11, MSI, Post Code	Standard 1D and GS1 DataBar symbologies
Interface	USB	USB (MS-5145U), Serial (MS-5145R) or PS/2 (MS-5145K)
Dimension (W x D x H in mm) & Weight	163 x 69 x 103 & 130g	63 x 169 x 51 & 100 g
Options	N/A	N/A

MR Series



Model Name	MR-2106/MR-2200
Magnetic Stripe Reading	<ul style="list-style-type: none"> •Bi-directional swipe •3-track support •Support ISO 7811 magnetic card
Material	Heavy duty die-casting housing
Interface	USB (HID/VCOM selection), Serial or PS/2
Dimension (W x D x H in mm) & Weight	145 x 46 x 34 & 455.6 g
Options	Dual head/dual sided swipe support (MR-2200)

Signature Pad

SP Series



Model Name	SP-1200
Features	<ul style="list-style-type: none"> •ITO resistive touch pad over 3.8" FSTN LCD •Adjustable LCD backlight contrast •Display area 3" (H) x 2.3" (V) with resolution of 320 x 240 •Touch resolution: 500 dpi •Tethered non-electronic stylus •Low power consumption: 70mA @ 5V DC through USB interface •Providing smooth bitmap and resolution required for signature verification •Simultaneous view of electronic signature on LCD pad and display monitor for visual signature verification
Interface	USB
Dimension (W x D x H in mm) & Weight	150 x 122 x 26 & 323.8 g



Mobile POS · All-In-One POS · POS Terminal
Infotainment Terminal · POS-Box



www.posiflex.com



Tel: +886 2 2268 5577



E-mail: sales@posiflex.com.tw



Add: 23, Datong St., Tucheng Dist., New Taipei City 236, Taiwan

© 2018 Posiflex Technology, Inc.

All rights reserved. All other trademarks are the property of their respective owners. In a continuing effort to improve our products, Posiflex Technology, Inc. reserves the right to change specifications and features without prior notice.